

TEST REPORT

SPONSOR: RIVERBANK ACOUSTICAL LABORATORIES | GENEVA, IL



PRODUCT NAME:

VENTED PRESSED PAPER PULP EGG CARTONS – COMPLETE & INVERTED

TEST DATE:

MARCH 28, 2023

TEST METHOD:

ASTM C423-22

STANDARD TEST METHOD FOR SOUND ABSORPTION AND SOUND ABSORPTION COEFFICIENTS BY THE REVERBERATION ROOM METHOD

RATING:

NRC= 0.80

1512 S BATAVIA AVENUE
GENEVA, IL 60134
630-232-0104

Test Report

www.riverbankacoustics.com

FOUNDED 1918 BY
WALLACE CLEMENT SABINE

SPONSOR: **Riverbank Acoustical Laboratories**
Geneva, IL

Sound Absorption
RAL™-A23-068

CONDUCTED: 2023-03-28

Page 1 of 10

ON: Vented Pressed Paper Pulp Egg Cartons - Complete & Inverted

TEST METHODOLOGY

Riverbank Acoustical Laboratories™ is accredited by the U.S. Department of Commerce, National Institute of Standards and Technology (NIST) under the National Voluntary Laboratory Accreditation Program (NVLAP) as an ISO 17025:2017 Laboratory (NVLAP Lab Code: 100227-0) and for this test procedure. The test reported in this document conformed explicitly with ASTM C423-22: "Standard Test Method for Sound Absorption and Sound Absorption Coefficients by the Reverberation Room Method." The specimen mounting was performed according to ASTM E795-23: "Standard Practices for Mounting Test Specimens During Sound Absorption Tests." A description of the measurement procedure and room specifications are available upon request. The results presented in this report apply to the sample as received from the test sponsor.

INFORMATION PROVIDED BY SPONSOR

The test specimen was designated by the sponsor as Vented Pressed Paper Pulp Egg Cartons - Complete & Inverted. The following nominal product information was provided by the sponsor prior to testing. The accuracy of such sponsor-provided information can affect the validity of the test results.

Product Under Test

Product Name: Vented Pressed Paper Pulp Egg Cartons
Materials: 100% Reclaimed paper
Nominal Dimensions: 12" long by 4.25" wide by 2.75" high

SPECIMEN MEASUREMENTS & TEST CONDITIONS

Through a full external visual inspection performed on the test specimen, Riverbank personnel verified the following information:

Test Specimen

Material: egg cartoons (12 egg capacity)
Dimensions: 216 cartons @ 103 mm (4.0625 in.) by 298 mm (11.75 in.)
Depth: 67.51 mm (2.658 in.)
Overall Weight: 12.59 kg (27.75 lbs)

1512 S BATAVIA AVENUE
GENEVA, IL 60134
630-232-0104

Test Report

www.riverbankacoustics.com

FOUNDED 1918 BY
WALLACE CLEMENT SABINE

Riverbank Acoustical Laboratories
2023-03-28

RAL™-A23-068
Page 2 of 10

Overall Specimen Properties

Size: 2.49 m (98.0 in) wide by 2.69 m (106.0 in) long
Thickness: 0.07 m (2.658 in)
Weight: 12.59 kg (27.75 lbs)
Mass per Unit Area: 1.88 kg/m² (0.38 lbs/ft²)
Calculation Area: 6.702 m² (72.14 ft²)

Test Environment

Room Volume: 291.98 m³
Temperature: 19.9 °C ± 0.1 °C (Requirement: ≥ 10 °C and ≤ 5 °C change)
Relative Humidity: 57.25 % ± 1.1 % (Requirement: ≥ 40 % and ≤ 5 % change)
Barometric Pressure: 99.9 kPa (Requirement not defined)

MOUNTING METHOD

Type A Mounting: The test specimen was laid directly against the test surface. The specimen egg cartons were placed upside down, closed. The perimeter edges were left exposed to replicate a typical field installation.

1512 S BATAVIA AVENUE
GENEVA, IL 60134
630-232-0104

Test Report

www.riverbankacoustics.com

FOUNDED 1918 BY
WALLACE CLEMENT SABINE

Riverbank Acoustical Laboratories
2023-03-28

RAL™-A23-068

Page 3 of 10

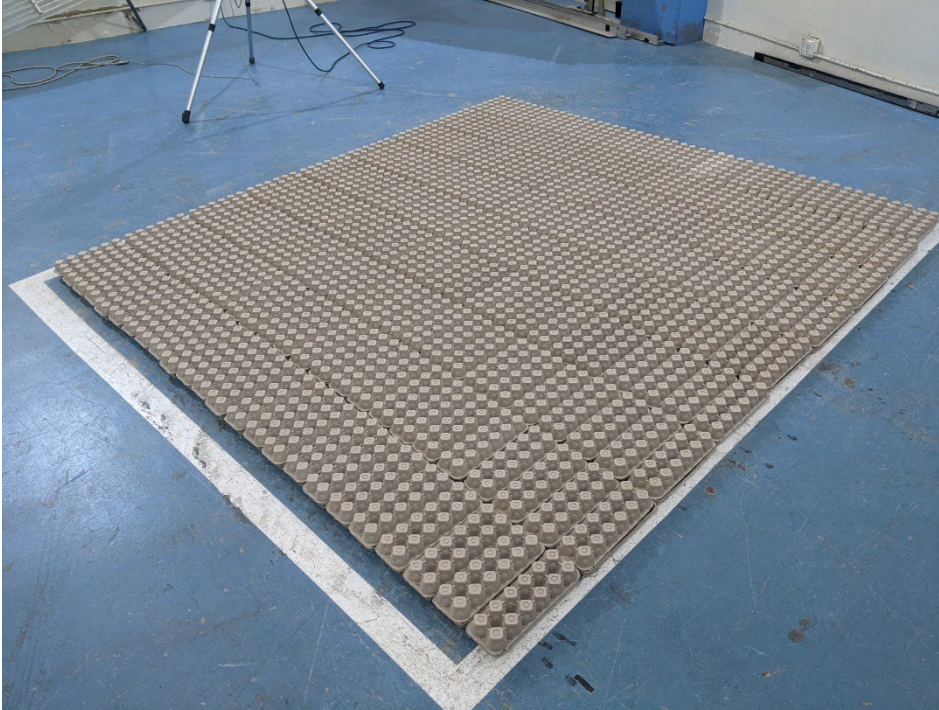


Figure 1 – Specimen mounted in test chamber



Figure 2 – Individual specimen egg carton

1512 S BATAVIA AVENUE
GENEVA, IL 60134
630-232-0104

Test Report

www.riverbankacoustics.com

FOUNDED 1918 BY
WALLACE CLEMENT SABINE

Riverbank Acoustical Laboratories
2023-03-28

RAL™-A23-068
Page 4 of 10



Figure 3 – Detail of specimen material

1512 S BATAVIA AVENUE
GENEVA, IL 60134
630-232-0104

Test Report

www.riverbankacoustics.com

FOUNDED 1918 BY
WALLACE CLEMENT SABINE

Riverbank Acoustical Laboratories
2023-03-28

RAL™-A23-068

Page 5 of 10



Figure 4 – Specimen egg cartons partially installed in test chamber

1512 S BATAVIA AVENUE
 GENEVA, IL 60134
 630-232-0104

Test Report

www.riverbankacoustics.com

FOUNDED 1918 BY
 WALLACE CLEMENT SABINE

Riverbank Acoustical Laboratories
 2023-03-28

RAL™-A23-068
 Page 6 of 10

TEST RESULTS

Specimen total absorption and absorption coefficient are tabulated at the eighteen standard frequencies. A graphic presentation of the data and additional information appear on the following pages.

| 1/3 Octave Center Frequency (Hz) | Total Absorption (m ²) | Total Absorption (Sabins) | Absorption Coefficient |
|--|---------------------------------------|------------------------------|---------------------------|
| 100 | 0.22 | 2.40 | 0.03 |
| ** 125 | 0.80 | 8.59 | 0.12 |
| 160 | 1.28 | 13.82 | 0.19 |
| 200 | 2.56 | 27.60 | 0.38 |
| ** 250 | 4.96 | 53.40 | 0.74 |
| 315 | 8.32 | 89.60 | 1.24 |
| 400 | 8.22 | 88.50 | 1.23 |
| ** 500 | 7.07 | 76.10 | 1.05 |
| 630 | 6.46 | 69.52 | 0.96 |
| 800 | 5.84 | 62.89 | 0.87 |
| ** 1000 | 4.92 | 52.98 | 0.73 |
| 1250 | 4.81 | 51.77 | 0.72 |
| 1600 | 4.58 | 49.28 | 0.68 |
| ** 2000 | 4.64 | 49.96 | 0.69 |
| 2500 | 5.21 | 56.04 | 0.78 |
| 3150 | 5.25 | 56.52 | 0.78 |
| ** 4000 | 4.62 | 49.71 | 0.69 |
| 5000 | 4.34 | 46.67 | 0.65 |

SAA = 0.84
NRC = 0.80

1512 S BATAVIA AVENUE
GENEVA, IL 60134
630-232-0104

Test Report

www.riverbankacoustics.com

FOUNDED 1918 BY
WALLACE CLEMENT SABINE

Riverbank Acoustical Laboratories
2023-03-28

RAL™-A23-068
Page 7 of 10

TEST RESULTS (continued)

The sound absorption average (SAA) is defined in ASTM C423-17 Section 3.1.1 as the arithmetic average of the sound absorption coefficients of a material for the twelve one-third octave bands from 200 Hz through 2500 Hz, inclusive, rounded to the nearest integer multiple of 0.01.

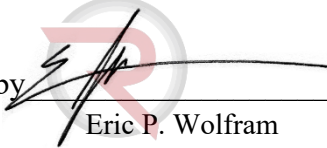
The noise reduction coefficient (NRC) is defined from previous versions of ASTM C423 as the arithmetic average of the sound absorption coefficients at 250 Hz, 500 Hz, 1000 Hz, and 2000 Hz, rounded to the nearest integer multiple of 0.05.

Tested by 

Marc Sciaky
Senior Experimentalist

Report by 

Keith Kimberling
Test Engineer

Approved by 

Eric P. Wolfram
Laboratory Manager

1512 S BATAVIA AVENUE
GENEVA, IL 60134
630-232-0104

Test Report

www.riverbankacoustics.com

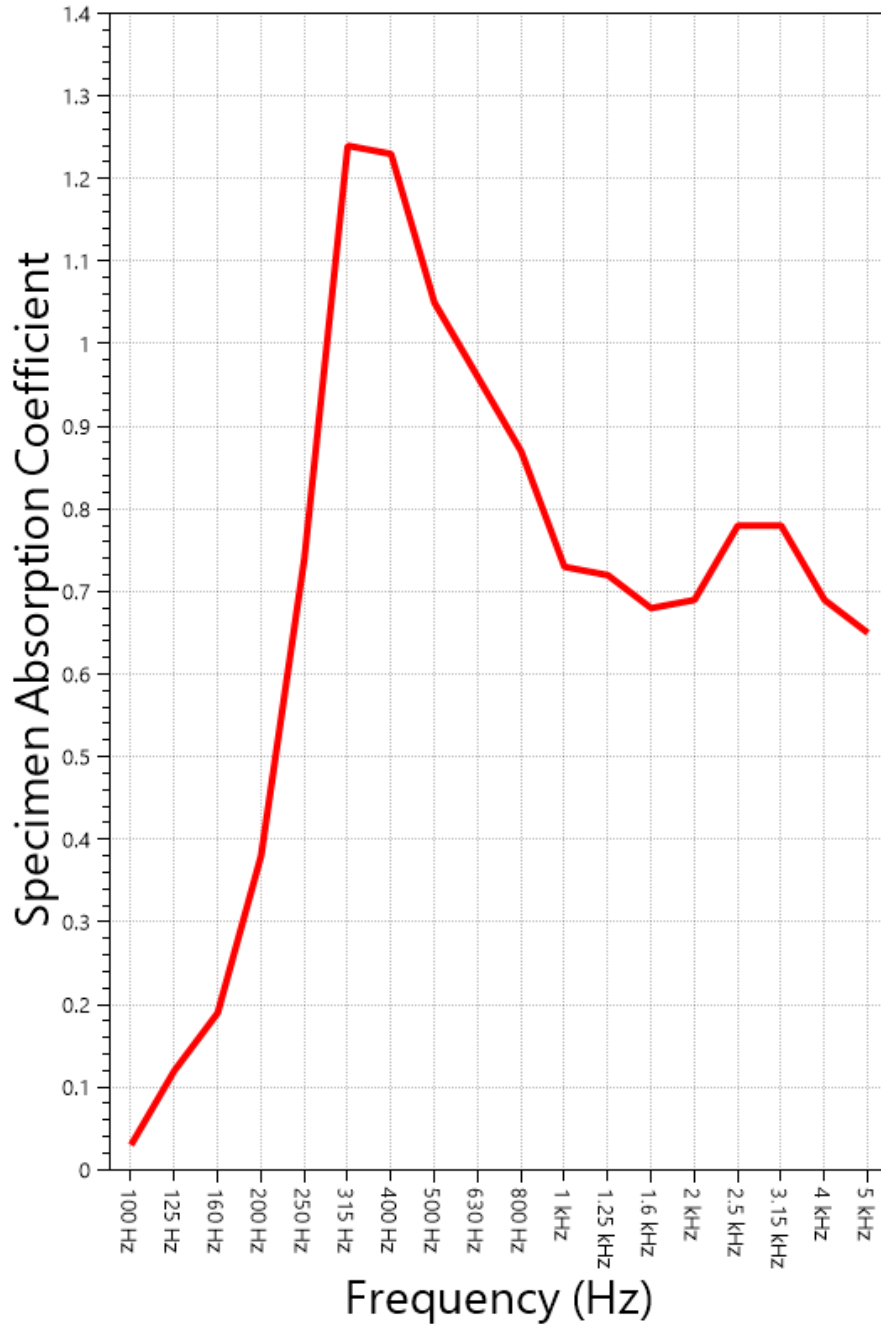
FOUNDED 1918 BY
WALLACE CLEMENT SABINE

Riverbank Acoustical Laboratories
2023-03-28

RAL™-A23-068
Page 8 of 10

SOUND ABSORPTION REPORT

Vented Pressed Paper Pulp Egg Cartons - Complete & Inverted



SAA = 0.84

NRC = 0.80



RIVERBANK ACOUSTICAL LABORATORIES IS ACCREDITED BY NVLAP (LAB CODE 100227-0) FOR ACOUSTICAL TESTING SERVICES IN ACCORDANCE WITH ISO/IEC 17025:2017 AND FOR THIS PROCEDURE. THIS REPORT MUST NOT BE USED BY THE CLIENT TO CLAIM PRODUCT CERTIFICATION, APPROVAL, OR ENDORSEMENT BY RAL, NVLAP, NIST, OR ANY AGENCY OF THE U.S. GOVERNMENT. THIS REPORT SHALL NOT BE MODIFIED WITHOUT THE WRITTEN APPROVAL OF RAL. THE RESULTS REPORTED APPLY ONLY TO THE SPECIFIC SAMPLE SUBMITTED FOR TESTING; RAL ASSUMES NO RESPONSIBILITY FOR THE PERFORMANCE OF ANY OTHER SAMPLE.

1512 S BATAVIA AVENUE
 GENEVA, IL 60134
 630-232-0104

Test Report

www.riverbankacoustics.com

FOUNDED 1918 BY
 WALLACE CLEMENT SABINE

Riverbank Acoustical Laboratories
 2023-03-28

RAL™-A23-068
 Page 9 of 10

APPENDIX A: Extended Frequency Range Data

Specimen: Vented Pressed Paper Pulp Egg Cartons - Complete & Inverted (See Full Report)

The following non-accredited data were obtained in accordance with ASTM C423-22, but extend beyond the defined frequency range of 100Hz to 5,000Hz. These unofficial results are representative of the RAL test environment only and intended for research & comparison purposes.

| 1/3 Octave Band Center Frequency (Hz) | Total Absorption (Sabins) | Absorption Coefficient |
|---|------------------------------|---------------------------|
| 31.5 | 2.90 | 0.04 |
| 40 | -0.29 | 0.00 |
| 50 | -1.78 | -0.02 |
| 63 | -9.76 | -0.14 |
| 80 | 3.94 | 0.05 |
| 100 | 2.40 | 0.03 |
| 125 | 8.59 | 0.12 |
| 160 | 13.82 | 0.19 |
| 200 | 27.60 | 0.38 |
| 250 | 53.40 | 0.74 |
| 315 | 89.60 | 1.24 |
| 400 | 88.50 | 1.23 |
| 500 | 76.10 | 1.05 |
| 630 | 69.52 | 0.96 |
| 800 | 62.89 | 0.87 |
| 1000 | 52.98 | 0.73 |
| 1250 | 51.77 | 0.72 |
| 1600 | 49.28 | 0.68 |
| 2000 | 49.96 | 0.69 |
| 2500 | 56.04 | 0.78 |
| 3150 | 56.52 | 0.78 |
| 4000 | 49.71 | 0.69 |
| 5000 | 46.67 | 0.65 |
| 6300 | 48.60 | 0.67 |
| 8000 | 44.52 | 0.62 |
| 10000 | 35.25 | 0.49 |
| 12500 | 41.73 | 0.58 |

1512 S BATAVIA AVENUE
GENEVA, IL 60134
630-232-0104

Test Report

www.riverbankacoustics.com

FOUNDED 1918 BY
WALLACE CLEMENT SABINE

Riverbank Acoustical Laboratories
2023-03-28

RAL™-A23-068
Page 10 of 10

APPENDIX B: Instruments of Traceability

Specimen: Vented Pressed Paper Pulp Egg Cartons - Complete & Inverted (See Full Report)

| <u>Description</u> | <u>Model</u> | <u>Serial Number</u> | <u>Date of Certification</u> | <u>Calibration Due</u> |
|--------------------------------|-----------------|----------------------|------------------------------|------------------------|
| System 1 | Type 3160-A-042 | 3160-106968 | 2022-07-12 | 2023-07-12 |
| Bruel & Kjaer Mic And Preamp D | Type 4943-B-001 | 2311440 | 2022-09-28 | 2023-09-28 |
| Bruel & Kjaer Pistonphone | Type 4228 | 2781248 | 2022-07-22 | 2023-07-22 |
| EXTECH Hygro 639 | SD700 | A.103639 | 2022-12-07 | 2023-12-07 |

APPENDIX C: Revisions to Original Test Report

Specimen: Vented Pressed Paper Pulp Egg Cartons - Complete & Inverted (See Full Report)

| <u>Date</u> | <u>Revision</u> |
|-------------|------------------------|
| 2023-03-30 | Original report issued |

END